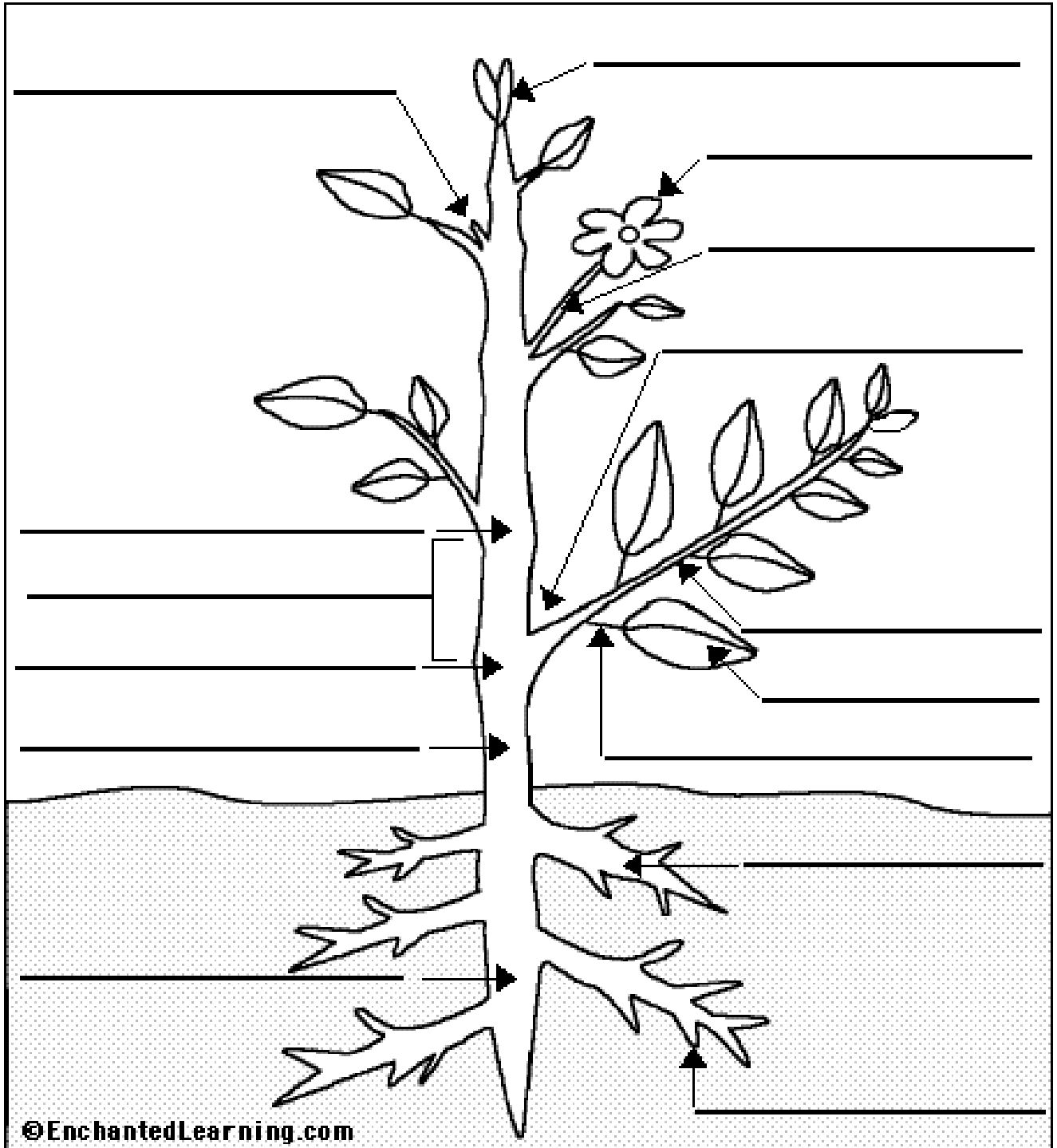


Label Flowering Plant Anatomy

Read the plant definitions, then label the diagram below.

Name: _____



| | |
|--|--|
| <p>axil - the angle between the upper side of the stem and a leaf, branch, or petiole.</p> <p>axillary bud - a bud that develops in the axil.</p> <p>flower - the reproductive unit of angiosperms.</p> <p>flower stalk - the structure that supports the flower.</p> <p>internode - the area of the stem between any two adjacent nodes.</p> <p>lateral shoot (branch) - an offshoot of the stem of a plant.</p> <p>leaf - an outgrowth of a plant that grows from a node in the stem. Most leaves are flat and contain chloroplasts; their main function is to convert energy from sunlight into chemical energy (food) through photosynthesis.</p> <p>node - the part of the stem of a plant from which a leaf, branch, or aerial root grows; each plant has many nodes. Label the two lower nodes (the first and second nodes) on the plant diagram.</p> | <p>petiole - a leaf stalk; it attaches the leaf to the plant.</p> <p>root - a root is a plant structure that obtains food and water from the soil, stores energy, and provides support for the plant. Most roots grow underground.</p> <p>root cap - a structure at the ends (tips) of the roots. It covers and protects the apical meristem (the actively growing region) of the root.</p> <p>stem - (also called the axis) is the main support of the plant.</p> <p>tap root - the main root of some plants; the tap root extends straight down under the plant.</p> <p>terminal bud - a bud located at the apex (tip) of the stem. Terminal buds have special tissue, called apical meristem, consisting of cells that can divide indefinitely.</p> |
| | |