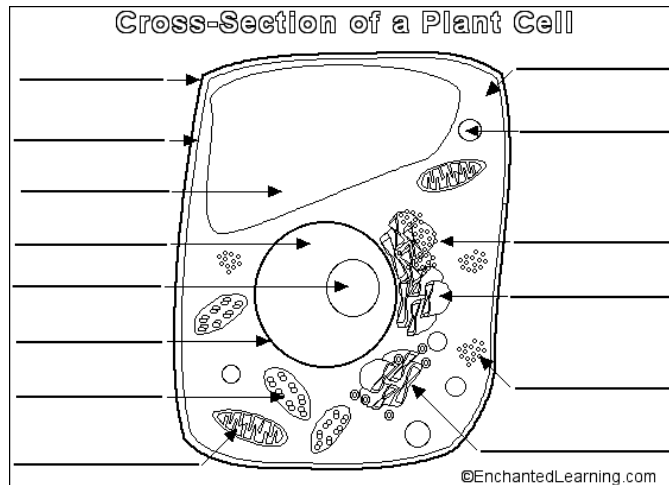


## Examining Plant Structures and Functions Study Guide

1. A \_\_\_\_\_ is a tiny structure that forms the basic building blocks of plants.
2. Plants are \_\_\_\_\_ organisms meaning that they have many cells with specific \_\_\_\_\_.
3. \_\_\_\_\_ is the presence of cells that perform unique activities for a plant.
4. How are cells forms into groups that work together?
  - a.
  - b.
  - c.
5. State three things that plants cells have that animal cells do not.
  - a.
  - b.
  - c.
6. Complete the diagram below by listing the cell structures of a plant.

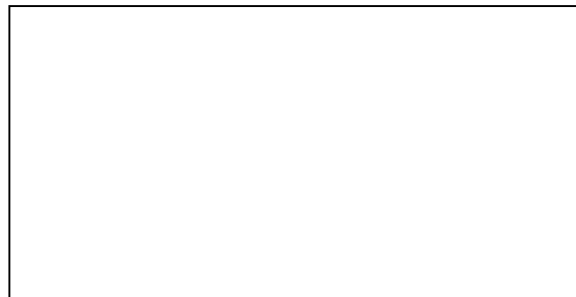


7. What are the functions of roots?
8. The two types of root systems are \_\_\_\_\_ and \_\_\_\_\_.
9. Draw the two types of root systems and label each of the following parts in each: primary root (not in fibrous), secondary roots, root hairs, and root cap.

10. What are the functions of stems?

11. Draw a stem and label each of the following parts: xylem, phloem, terminal bud, and lateral bud.

12. In the box below, draw and label each of the internal parts of a leaf: cuticle, upper epidermis, lower epidermis, palisade mesophyll, spongy mesophyll, guard cells, and stomata. Next, state the function of each of those parts.



13. Complete the following diagram by labeling the indicated plant's flower structures.

